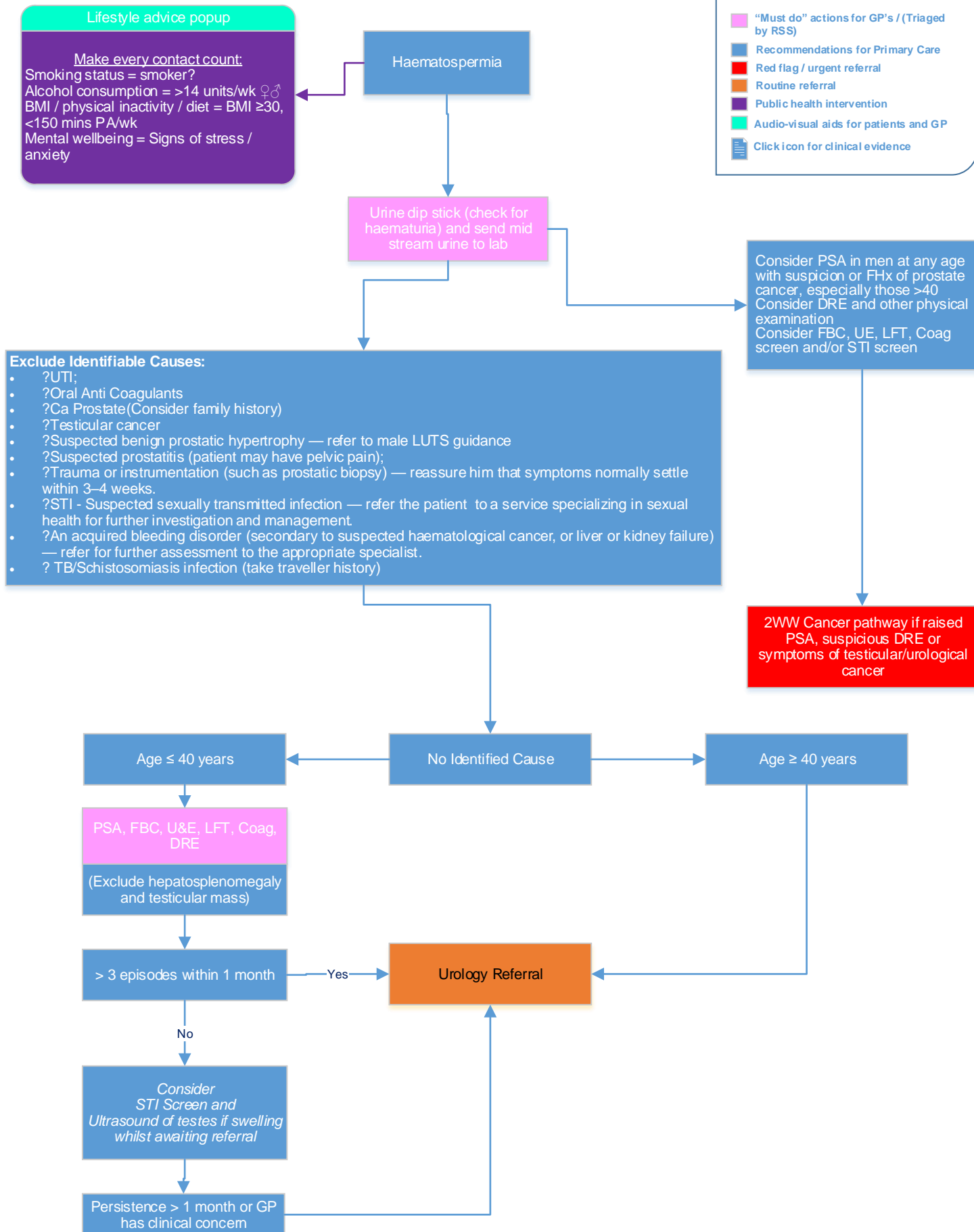


Key

- "Must do" actions for GP's / (Triaged by RSS)
- Recommendations for Primary Care
- Red flag / urgent referral
- Routine referral
- Public health intervention
- Audio-visual aids for patients and GP
- Click icon for clinical evidence



GP's can access **ADVICE & GUIDANCE** for Urology via e-RS. Specialists/Consultants should reply within 3-5 working days.