

# Secondary Amenorrhoea/Oligomenorrhoea Pathway

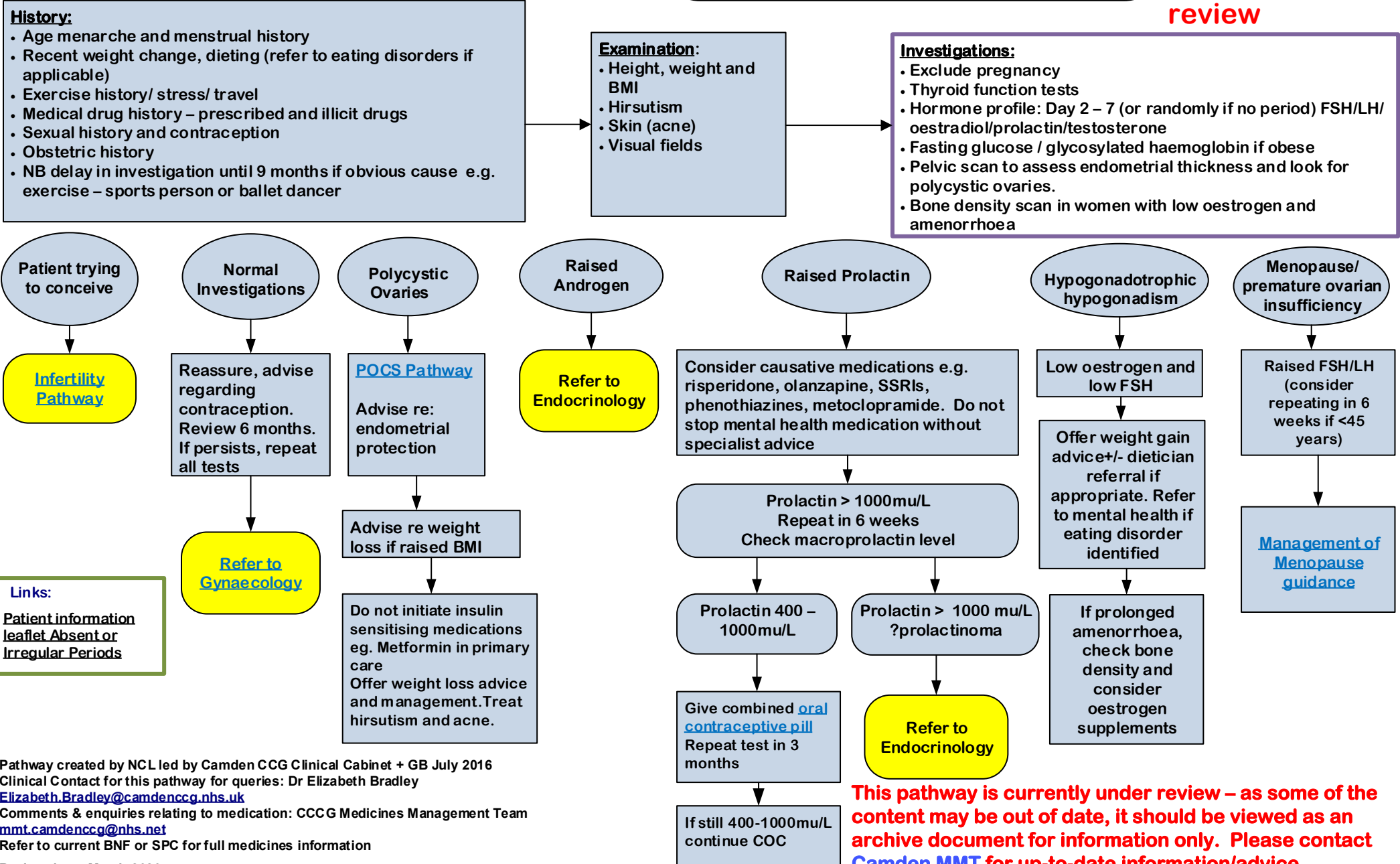
This pathway has been developed from published guidance, in collaboration with local gynaecologists.

This guidance is to assist GPs in decision making and is not intended to replace clinical judgment.

Primary amenorrhoea (not included in this pathway): by 14 if no secondary sexual characteristics or by 16 with normal sexual characteristics

Secondary amenorrhoea: no menstrual bleeding for 6 months.  
Oligomenorrhoea: periods that occur at intervals of 35 days to 6 months with less than 9 cycles per year.

**Pathway under review**



Pathway created by NCL led by Camden CCG Clinical Cabinet + GB July 2016  
 Clinical Contact for this pathway for queries: Dr Elizabeth Bradley  
[Elizabeth.Bradley@camdenccg.nhs.uk](mailto:Elizabeth.Bradley@camdenccg.nhs.uk)  
 Comments & enquiries relating to medication: CCG Medicines Management Team  
[mmt.camdenccg@nhs.net](mailto:mmt.camdenccg@nhs.net)  
 Refer to current BNF or SPC for full medicines information  
 Review due – March 2020

**This pathway is currently under review – as some of the content may be out of date, it should be viewed as an archive document for information only. Please contact Camden MMT for up-to-date information/advice.**