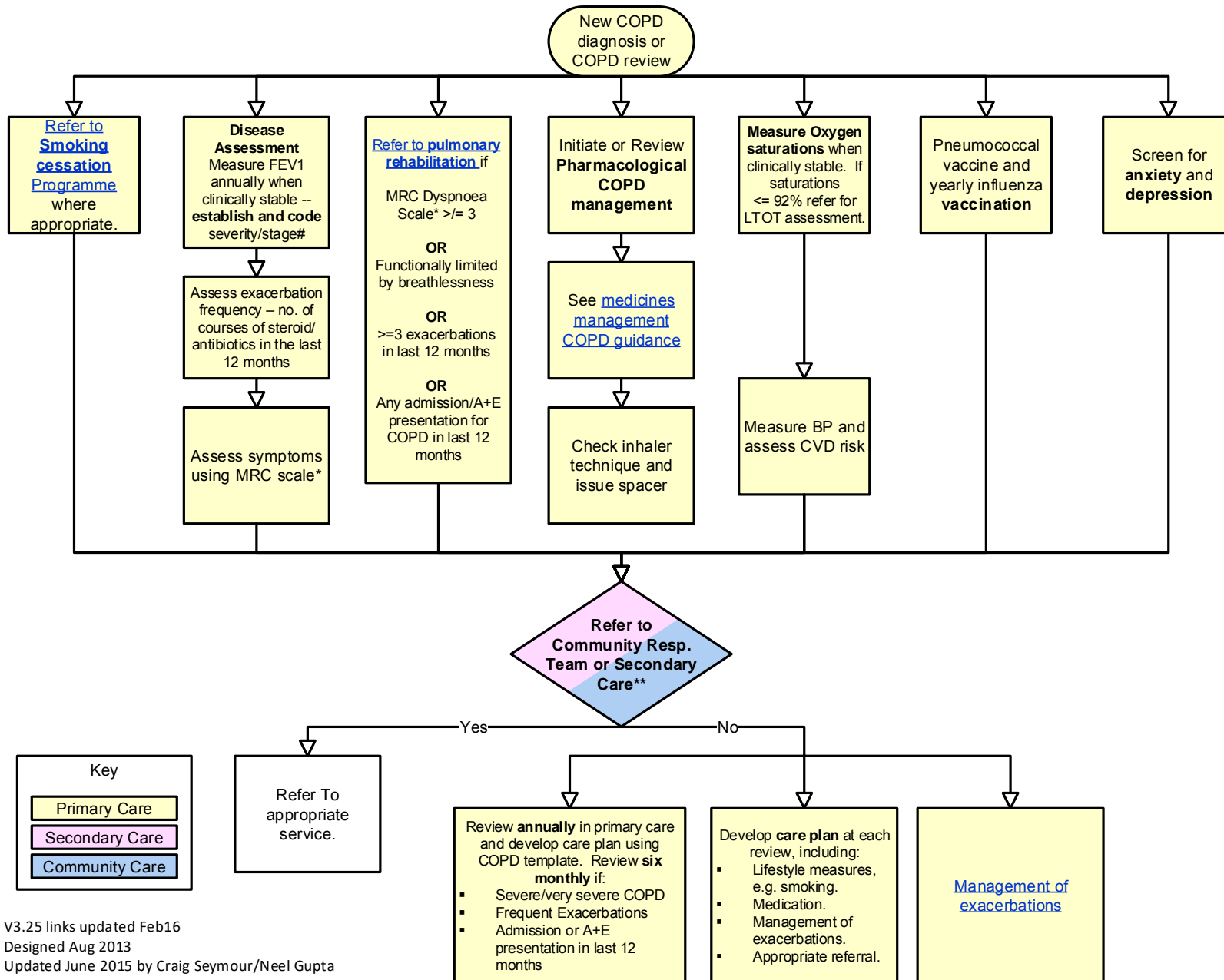


COPD Management Pathway



***COPD Severity/Stage (NICE 2010):**

Stage 1	Mild	FEV1 \geq 80 % of predicted
Stage 2	Moderate	FEV1 50- 79 % of predicted
Stage 3	Severe	FEV1 30-49 % of predicted
Stage 4	V. Severe	FEV1 <30 % of predicted

***MRC Dyspnoea Scale:**

1. Not troubled by breathlessness except on strenuous exercise
2. Short of breath when hurrying or walking up a slight hill
3. Walks slower than contemporaries on level ground because of breathlessness, or has to stop for breath when walking at own pace
4. Stops for breath after walking about 100m or after a few minutes on level ground
5. Too breathless to leave the house, or breathless when dressing or undressing

****Referral Criteria for Secondary Care:**

- Diagnostic doubt (may need more advanced lung function and CT etc)
- New respiratory failure (O2 Sats \leq 92%) and all those with type 2 respiratory failure (need blood gases/long term oxygen therapy (LTOT) assessment)
- Severe disease, defined as Stage 3 or 4 at age <60 years (possible transplant)

****Referral Criteria for Community Resp. Team:**

- New diagnosis at Stage 3 or 4 not covered by above
- Symptomatic despite appropriate therapy
- Recurrent exacerbations (\geq 3 year) despite therapy
- Anyone who has been hospitalised because of their COPD
- Rapid decline in annual spirometry
- Difficulty with compliance/concordance
- Need for Pulmonary Rehabilitation
- Prominent anxiety / depression (for psychologist)
- Management of acute exacerbations
- Supported Discharge

