

Ovarian Cyst Pathway

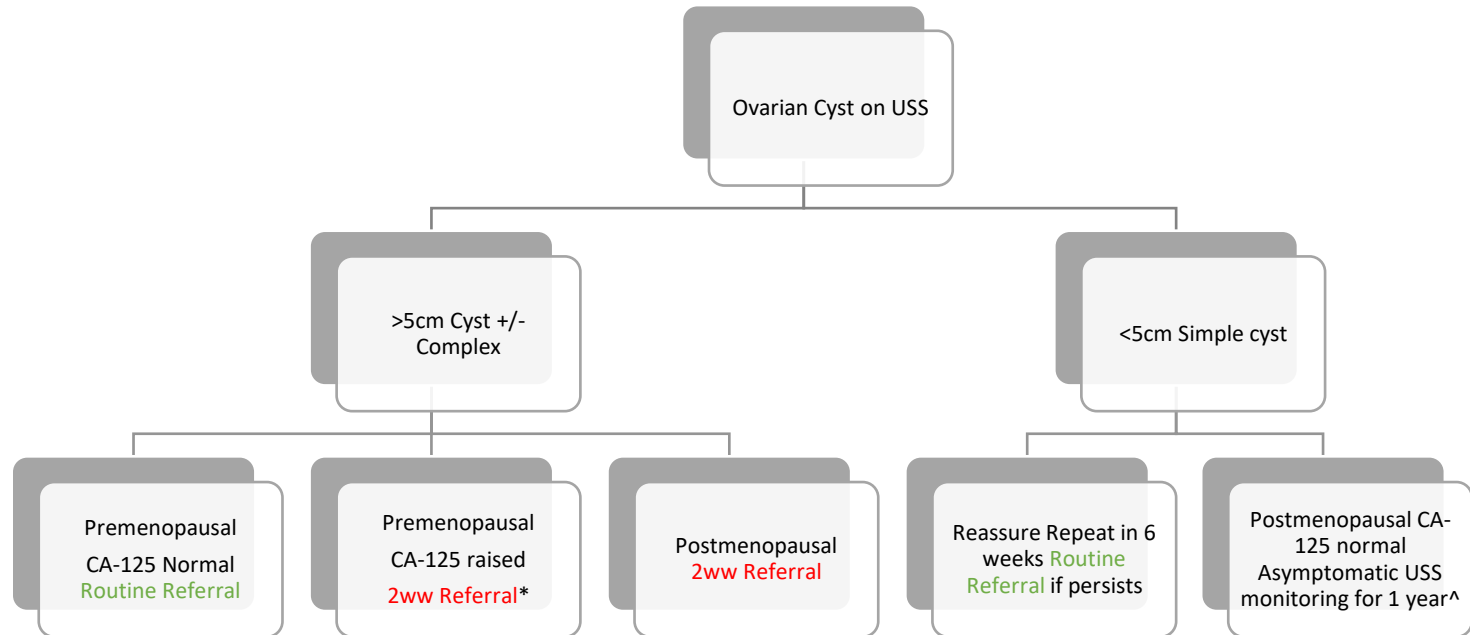
Red Flags: Ovarian Cancer

Abdominal Distention,
 Urgency +/- Frequency,
 Appetite Loss or Early Satiety,
 Abdominal or Pelvic Pain persisting, increasing or frequent especially women >50yo

Ascites +/- Abdominal or Pelvic mass (not fibroids)

New Irritable Bowel Syndrome symptoms within last 12 months in >50yo

Unexplained Weight Loss or Change in Bowel Habit



*consider benign causes of raised CA-125 endometriosis, fibroids.
2ww Referral if red flags, USS report suggests ovarian cancer, clinical concerns or uncertain

^ USS & CA-125 every 3 months for 1 year
 No change in size/stable -> Stop monitoring
 If increase in size/CA-125 raised -> **2ww Referral**

Dr Belinda Solomon
 Approved by North Middlesex University Hospital, University College London Hospital & Whittington Hospital Gynaecologists
 Based on most recent published guidelines

March 2021, Review March 2026