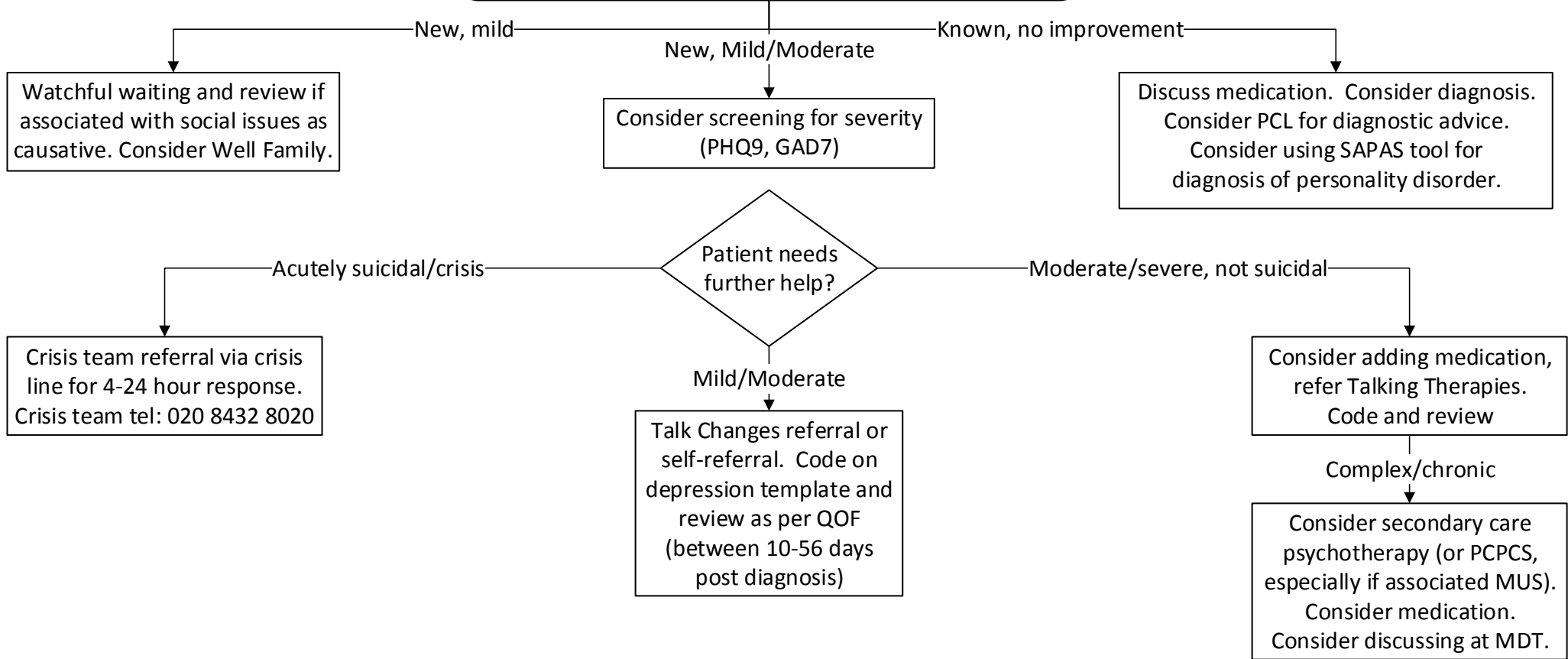


## City and Hackney Anxiety and Depression Pathway

Patient presents with anxiety and/or depression symptoms



For all patients: assess risk, safeguarding, suicide risk. Consider referral for associated factors e.g. domestic violence.

<p><b>Patient has an LTC?</b> Refer to Talk Changes if mild/moderate. Can also refer if no obvious anxiety/depression but has poor control/motivation <a href="#">Referral form</a></p>	<p><b>Domestic Violence</b> Hark Template IRIS</p>	<p><b>Suicide Risk</b> Use depression template</p>
---	--	--

For all patients: offer social prescribing and Five to Thrive community activities when appropriate as ways of improving and maintaining better mental health long term